



RSC Joining Assembly Instructions

Document Part #: 1222273

ECN: 55505

Rev: B

Date: 12-26-2014

Subject: Joining two RSC units

Parts List

Quantity	Part Number	Description
1	1219868	MULTI-UNIT BOLT ANGLE,RSC
3	V802291	BOLT, 3/8-16, HEX HEAD
6	V801491	WASHER, 3/8 ID
3	V800898	NUT, 3/8-16 HEX
8	V802087	SCREW, #8 TRUSS HD 1/2" LONG
1	1241958	PLATE, VALANCE ALIGNMENT

If side panels are installed, remove side panels between the units to be joined by removing the 5 caps over the side panel bolts, removing the bolts, and then remove the side panel. If shipping braces are installed instead of side panels, remove shipping braces.

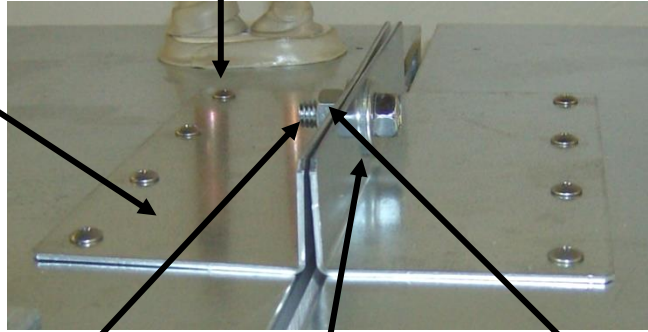


Remove caps and bolts (5 total)

RSC with side panel and shipping braces removed will look like this



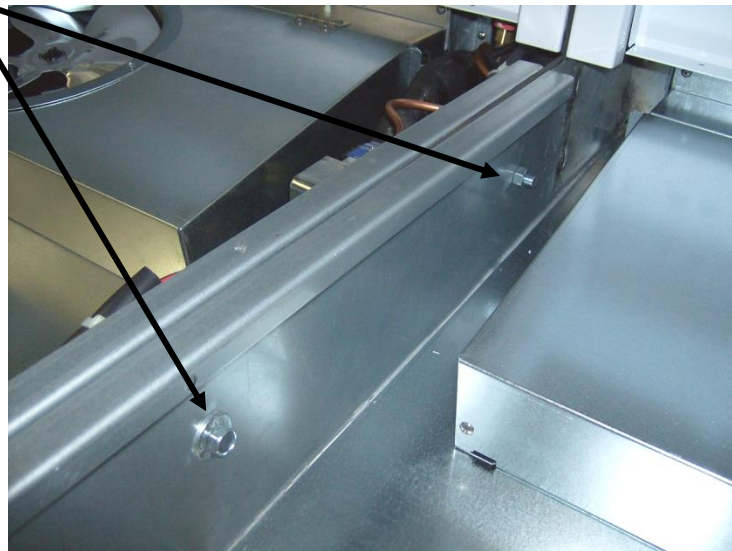
Add 1219868 angle plates to top. Put eight V802087 screws into dimples in top.



Push units together and add V802291 Bolt, 2 ea V801491 washer and V800898 nut.

Remove lower deck panels.

Add 2 ea V802291 Bolt, 4 ea V801491 washer and 2 ea V800898 nuts.



Tighten all 3 nut and bolt sets. Reinstall lower deck panels.

Install Valance Alignment Plate:

Remove 4 screws. Locate 1241958 Valance Alignment Plate as shown. Reinstall screws.

