



Installation Instructions

The Next Dimension in Technical Service Information

Installation Instructions: 1255134 INSTL INSTR,RSC CONTROLLER RELOCATE

Date:
07/29/16

Kit Number : 1255142-X KIT,RSC CONTROLLER RELOCATE

Subject: RSC Controller Condensation

Rev. A

Products: RSC Controllers built between 12/1/2014 and 12/31 /2015

ECN: 56358

Purpose: To relocate the controller to the right side of the unit in order to prevent reoccurring failures due to condensation ingress.

Rev Date: N/A

Quantity	Part Number	X	Description
1	1251279	1	Pnt,Valence,CTRL,BK RSC 3
	1251287	2	Pnt,Valence,CTRL,BK RSC 4
	1251295		Pnt,Valence,CTRL,BK RSC 6
1	1243039-1.07		CONTROLLER,RSC TIMED DFRST
1	1255304		RSC,Controller Cutout Cover
1	1255134		Installation Instruction
2	V802133		SCR 10-16,3/4HX CR SLF DRIL,RoH

Caution: Switch off power at the power box (located on the top of the unit)

Steps to install the controller to the right side of the unit

NOTE: Step 1-3 is to remove the existing valence and Step 4-8 to install the new valence.

Step.1 Confirm the location of the RSC controller inside the valence.



Figure# 1 : Location of the controller



View from underneath the valence

Step.2 Remove the valence screws as shown



Figure # 2 : Screws underneath

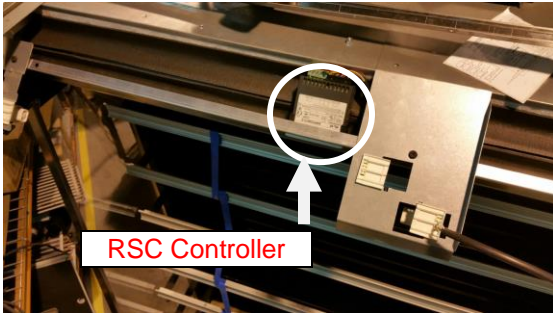


Left side

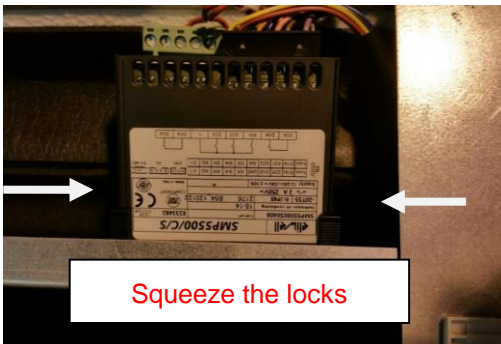


Right Side

Step.3 Remove the valence



Step.4 Remove the existing Controller (Squeeze and Slide)

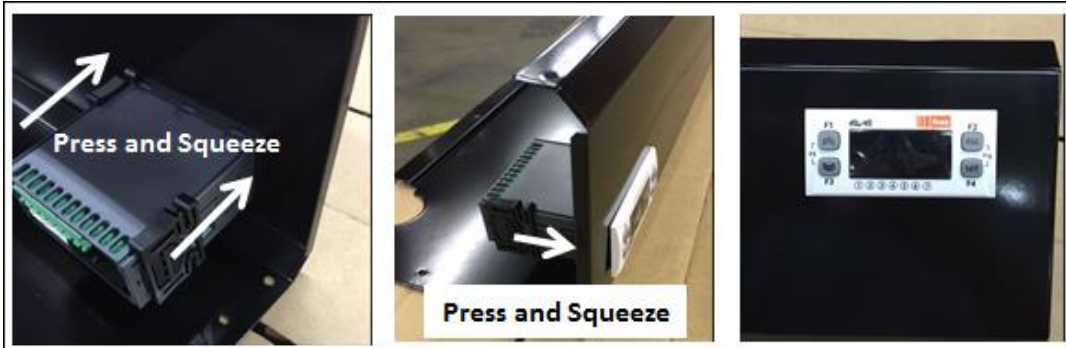


Step.5 Attach the new controller to the valence provided with the kit.



Figure # 1 RSC-6 Front Valence Black and RSC Controller 1243047-1.07

Step.6 Insert and lock the controller in panel opening with the slide locks (provided) as shown.



Step.7 Attach the harness to the controller. Dress the excess wire behind the valence.



Step.8 Attach the panel and the trims to the unit. Refer to step 2 for screws locations



Figure: To show Trims, Valence and Controller attached.

Step.9 Cover the controller cutout with the metal cover and the self tapping screw provided.

Step.10 Power on the RSC unit. Check the display to confirm that the revision is 1.07. The software revision will be shown for 5 seconds after initial power on. Alternate method – Press and hold BTN F2 for 5 seconds – the display will show the software revision.