



RSC Showcase Honeycomb Filter Cleaning Instruction

Revision: A

Date: 11/10/2014

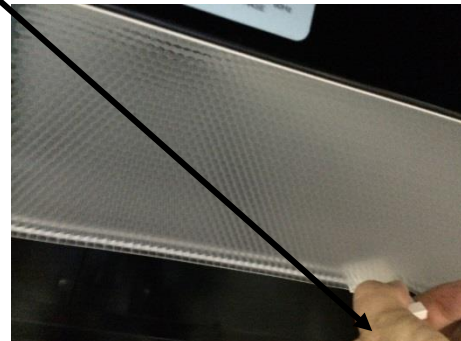
Subject: RSC Honeycomb Filter Cleaning

Frequency: Clean once per 90 days



Step 1: Remove honeycomb filter once every 90 days from upper section behind lights.

Step 2: To remove the filter pull down the tab located in the back of the filter.



Step 3: Wash the filter with water only to remove dust and dirt. Shake the water from the filter and wipe off with a paper towel. Recommended sinks for cleaning- Mop sink as a primary recommendation, wash bay in 3-comp sink secondary option- must clean and sanitize sink before and after use.

Note: The filter does not need to be completely dry before it is placed back in the RSC Showcase.



Step 4: Dry in backroom away from food storage on clean, sanitized area.

Step 5: Replace the filters by pushing in the front tabs first and pushing up on the back side.



Note: Depending on the model of the RSC there may be multiple filters.

